

Access DevCon 2020

April 23rd-24th

Ebo Quansah, Program Manager

Ebo Quansah
Program Manager



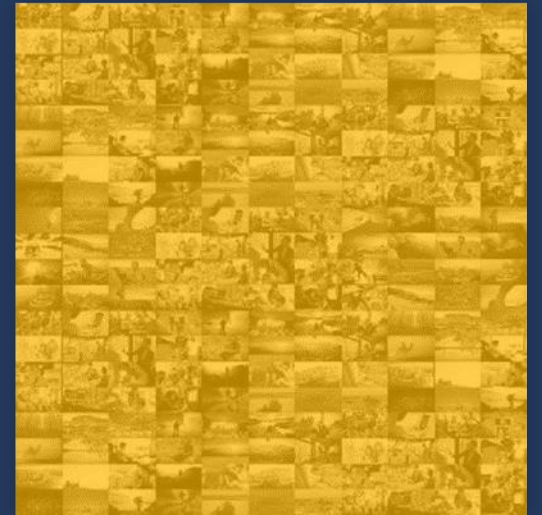
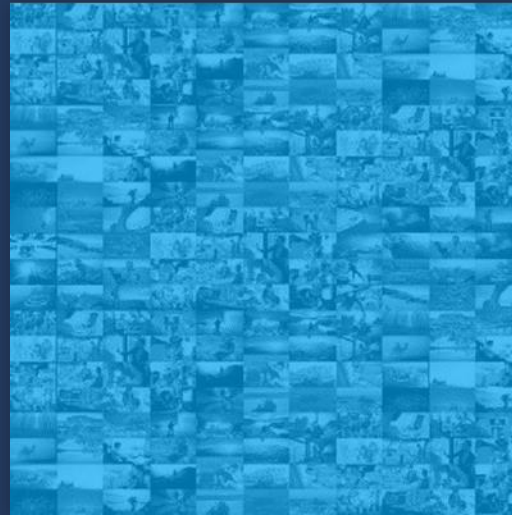
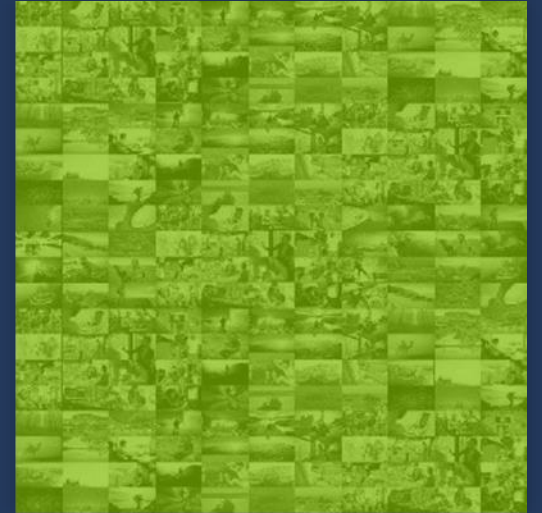
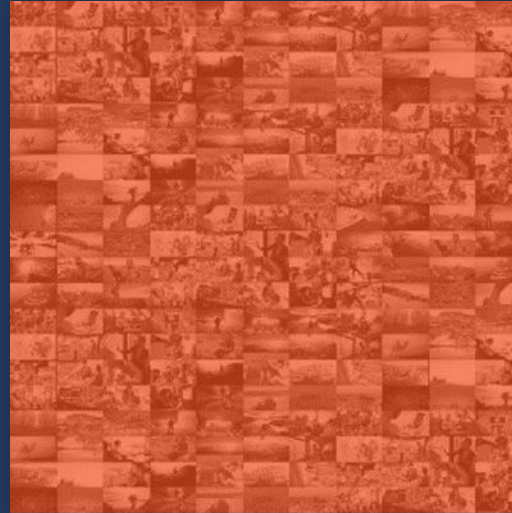


Agenda

- **Brief Intro Into Microsoft's Mission**
- **Access in our Ecosystem**
- **What's New in Access?**
 - Product/Feature Updates
 - Web App Retirement
 - Access Roadmap
- **Community Engagement**
 - Submitting your Feedback
 - Community Priorities from the Access Team
 - Recap of recent community events
 - How to continue staying in touch/engaged
- **Q&A**

Microsoft's mission

Empower every person and
every organization on the
planet to achieve more



Growth mindset



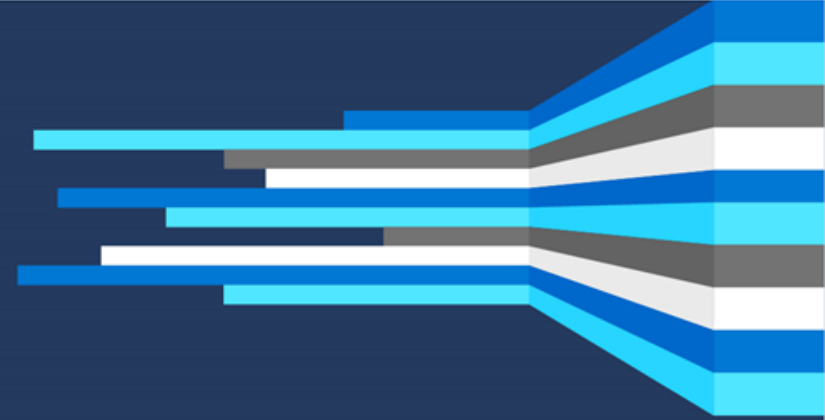
Customer obsessed

Diverse & Inclusive

One Microsoft



Make a difference



Microsoft Access Is...

- An operational database that stores, manages and tracks real-time business information that is **often mission-critical**.
- Used by 95% of the Fortune 500
- Deeply wired into organizations, whether large or small
- “Sticky”** – most organizations argued that even if Access was unbundled from Office, they would continue to buy it
- NOT DEAD!!!**



Access 2020 Priorities

Customer Satisfaction



Reliability

Responding to Feedback

Cloud Connectivity



Cloud Data

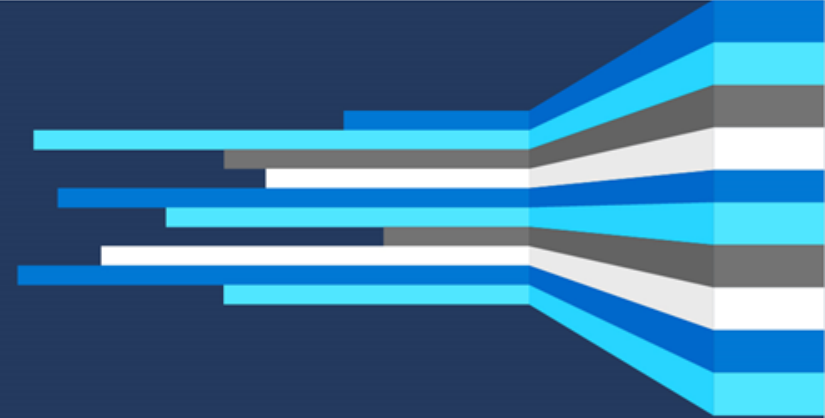
Community



Events

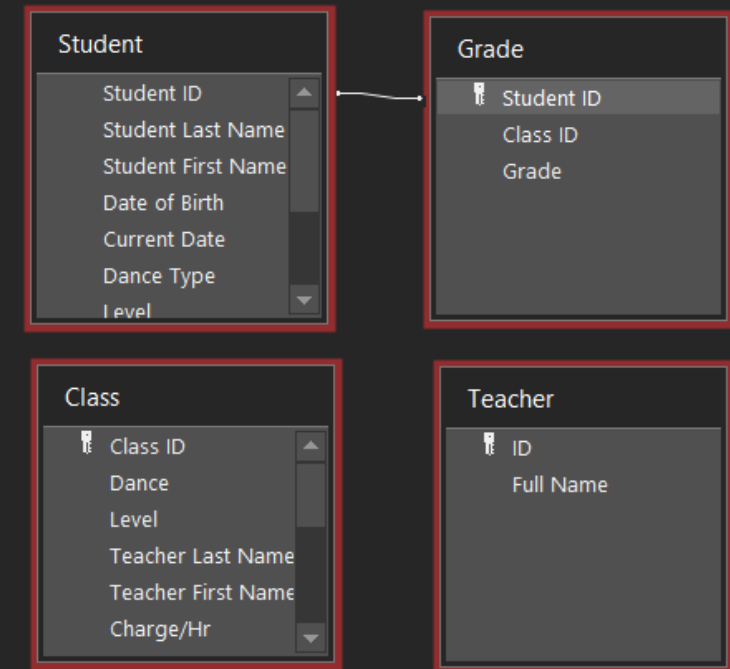
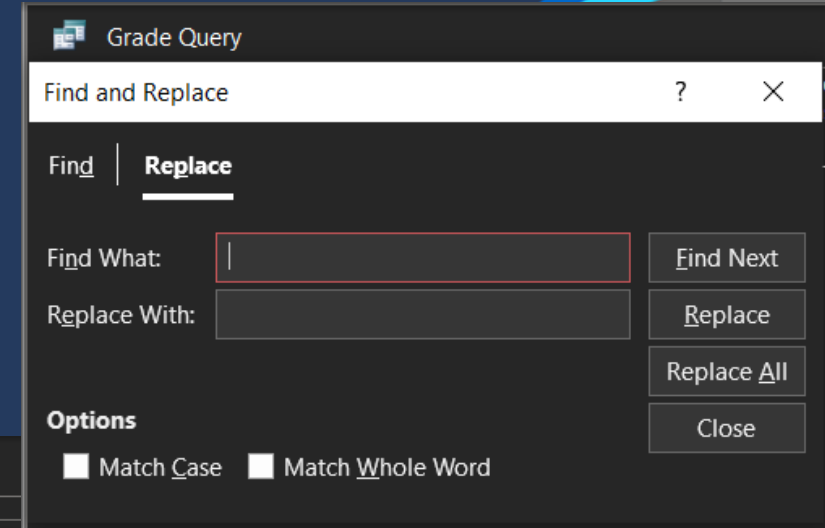
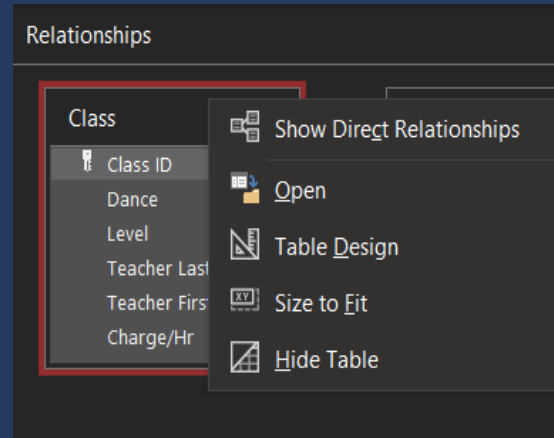
Online Engagement

Resources

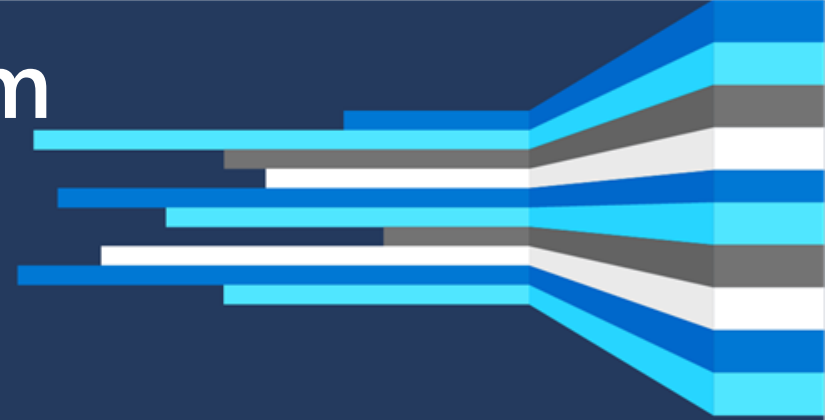


Access Query Improvements

1. Find and replace dialogue in SQL View
2. Mouse Wheel scroll in relationship window and SQL View
3. Right-clicking a table to design and size it, in addition to open
4. Auto-size tables by double clicking its edge
5. Multiple table select in the Relationships window



Breaking ACE Out of the Office Ecosystem



- 2016 will be the last version of the ACE Redistributable Engine
 - We will continue to support the 2010/2016 Redist for as long as the 2010/2016 MSI versions of Office are supported
- Going forward, the Redist will not be necessary if you have a full C2R version of Office installed, or the O365 runtime
- With O365 or C2R versions of Access 2016/2019 Consumer, you no longer need to install the ACE Redistributable to use the:

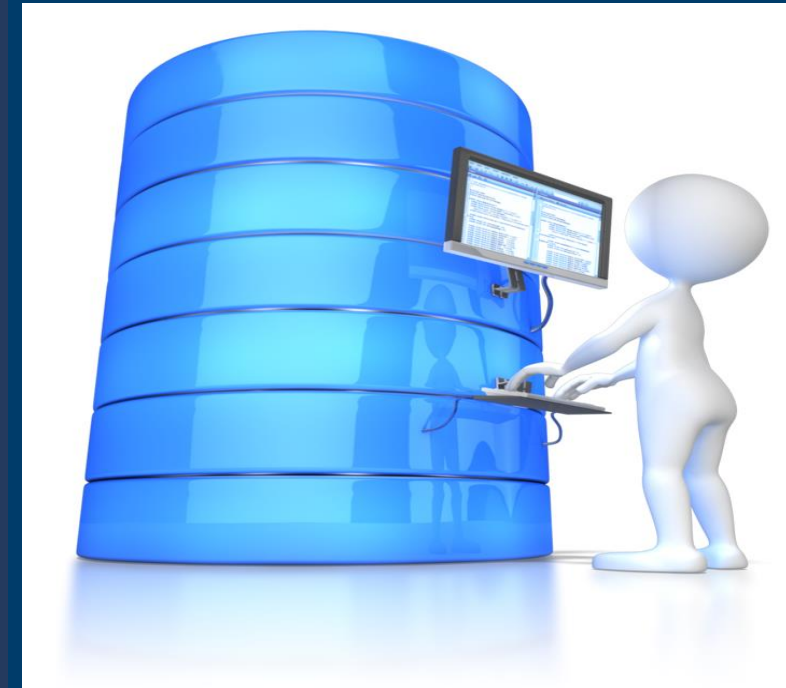
ACE OLEDB provider



DAO Interface (Coming Soon..)



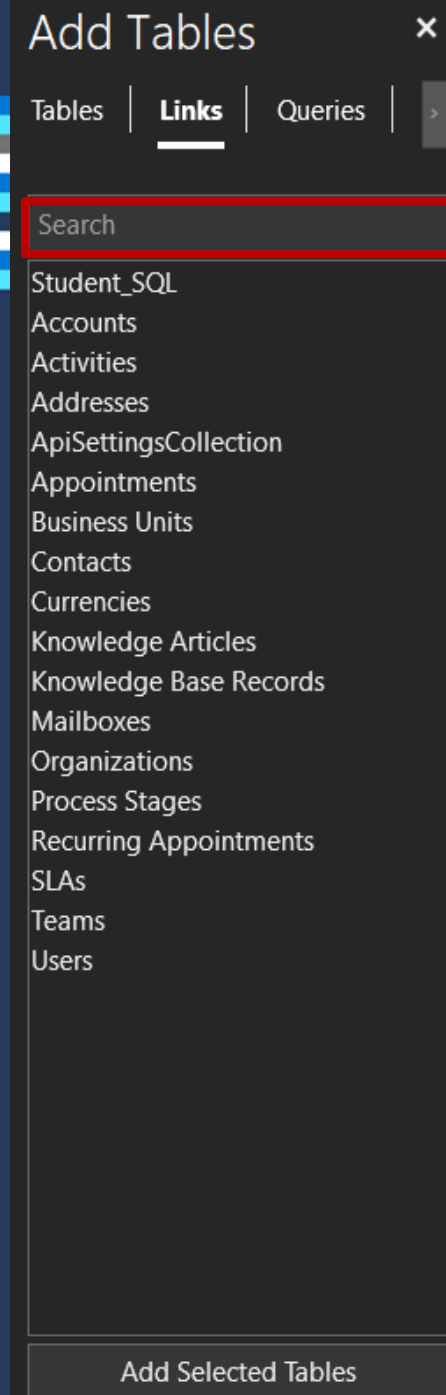
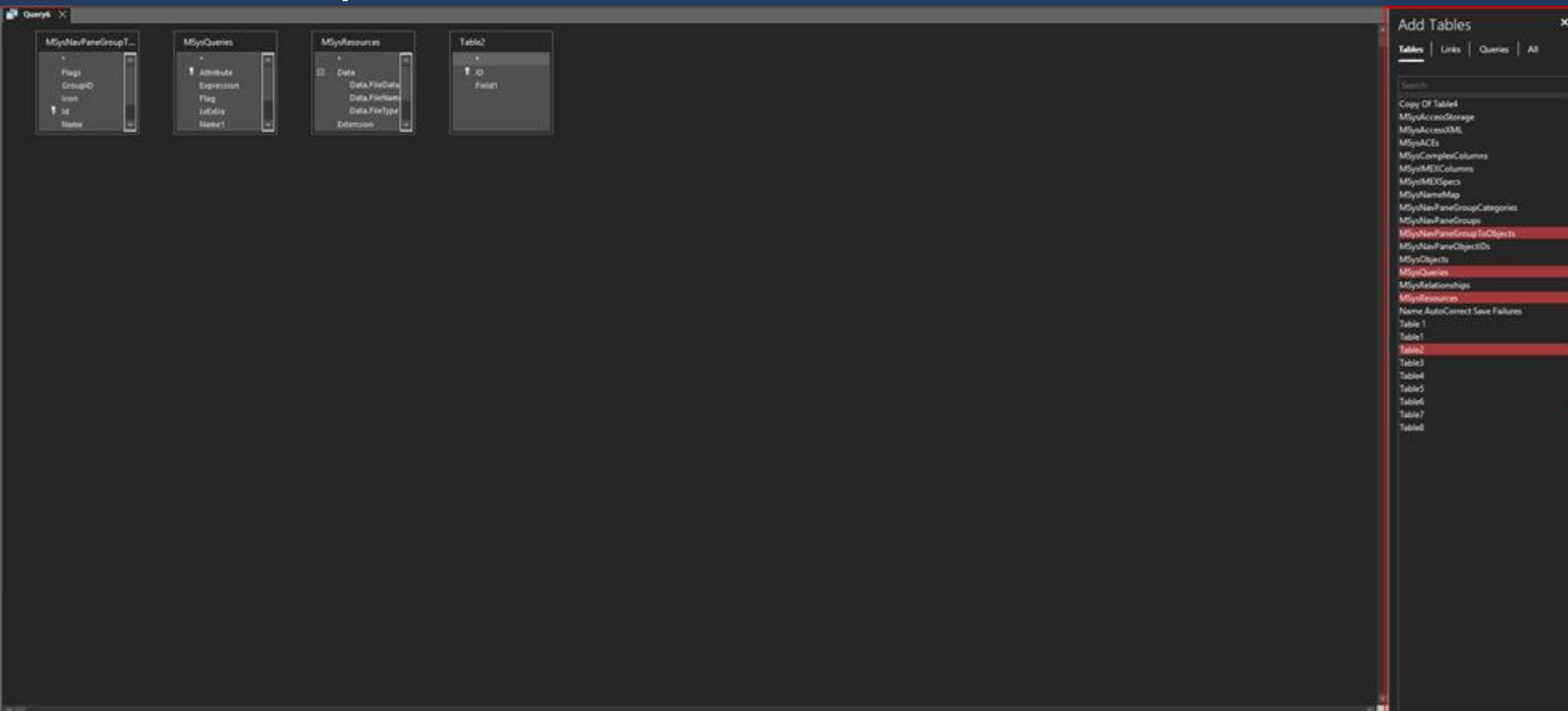
ODBC Interface (Coming Soon..)



***Office-Wide Achievement!**

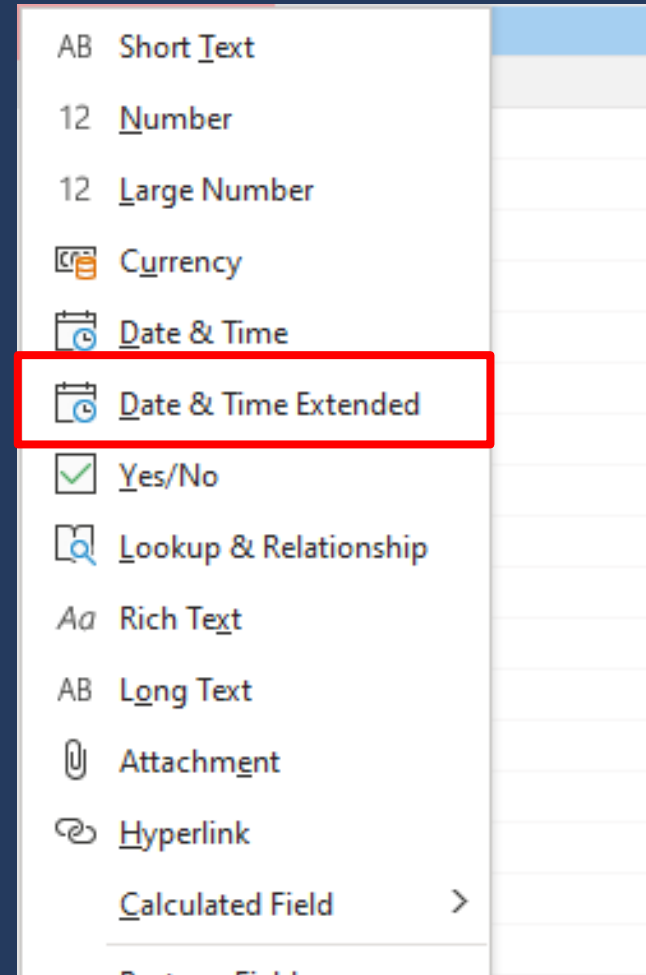
Add Tables Task Pane (coming soon)

- Easily select/multi-select tables to add/remove in query window
- Four tabs (Tables/Queries/All), with the new "Links" tab to display linked tables
- Search box to filter the current list
- Drag and drop items from task pane to query or establish relationships



NEW Date/Time Extended Data Type (coming soon!)

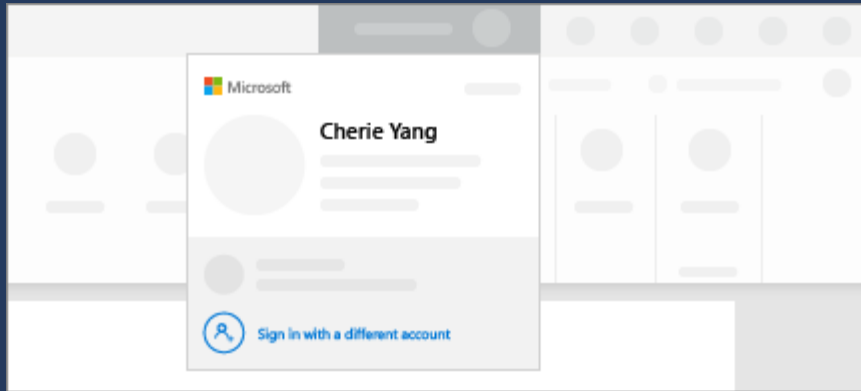
- Extended our Date/Time data type to a larger date range (0001-01-01 through 9999-12-31), and stronger fractional precision of time (seconds→nanoseconds)
- Equivalent to SQL's DateTime2 type, and will be supported in all versions of SQL starting in 2016
- 3 components: Remote table support, Local table support, expression support
- Drives stronger SQL Integration



What Else?

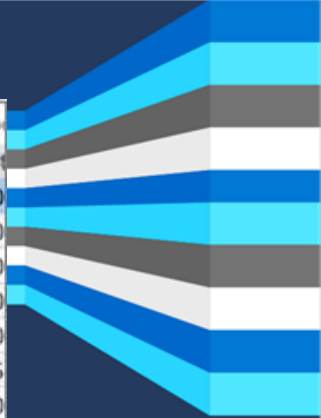
Modernized Tabs

- Clearly see the active tab,
- Drag tabs for rearranging purposes
- Close database objects with just one click.



Zoom Improvements (More to be made)

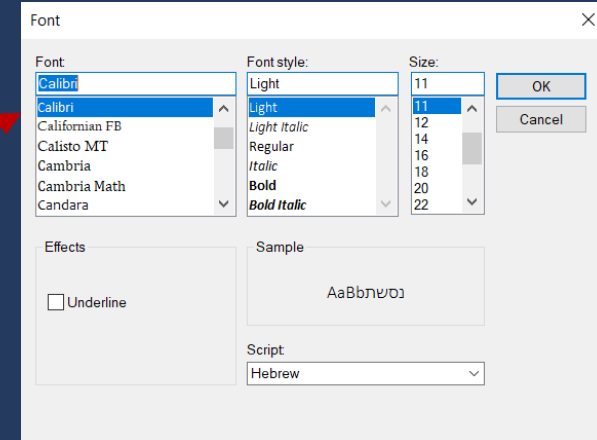
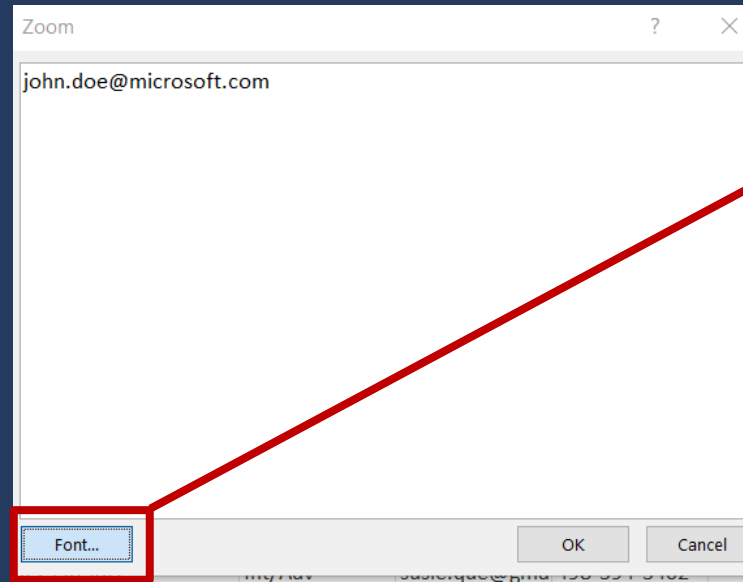
- Shift + F2 to zoom into a selected cell
- Clearly see the active tab,
- Drag tabs for rearranging purposes
- Close database objects with just one click.



Invoice #	Order Date	Shipped	Sub Total	Taxes	Shipping	Invoice Tot
81	4/25/2006		\$0.00	\$0.00	\$0.00	\$0
80	4/25/2006		\$380.00	\$0.00	\$0.00	\$380
79	6/23/2006	6/23/2006	\$2,490.00	\$0.00	\$0.00	\$2,490
78	6/5/2006	6/5/2006	\$1,560.00	\$0.00	\$200.00	\$1,760
77	6/5/2006	6/5/2006	\$2,250.00	\$0.00	\$60.00	\$2,310
76	6/5/2006	6/5/2006	\$660.00	\$0.00	\$5.00	\$665
75	6/5/2006	6/5/2006	\$510.00	\$0.00	\$50.00	\$560
74	6/8/2006	6/8/2006	\$510.00	\$0.00	\$300.00	\$810
73	6/5/2006	6/5/2006	\$96.50	\$0.00	\$100.00	\$196
72	6/7/2006	6/7/2006	\$230.00	\$0.00	\$40.00	\$270

Account Manager Updates

- Consolidates O365 accounts (both work and personal) in a central place
- Users can seamlessly switch between accounts



Access Web Apps

- Access Web Apps 2013 have been retired from SharePoint Online in April 2018
- Access Web Databases 2010 has also been retired (leveraging 2013 AWA retirement momentum)
 - Blocked from Accessing SPO site
 - Will be redirected to download Access file
 - **Please download your Access Web App Data following Steps in Screenshot**
 - **By mid-May, you will no longer have any access to your web database, including the ability to download it**

Timeline:

Comms push
(through MC
posts)



Developed in
app banner



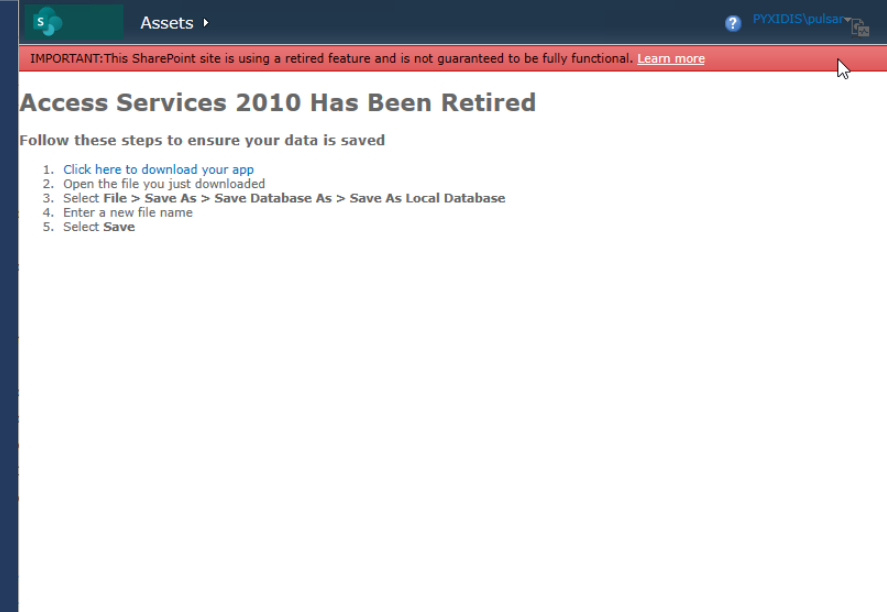
Blocked Creation
of New Web
Databases to SP
Online



Disabled app
edits/turned into
read only mode



**Turned Off
Service**



- ✓ Communication plan and customer outreach
- ✓ Efforts to minimize data loss risk
- ✓ Can download Access file

Accessibility – We Have Work To Do!

The Office 365 team has increased its investments in accessibility to a historical high and is committed to delivering inclusive productivity experiences to empower the [1 billion+](#) people with disabilities on this planet to achieve more



How is Office delivered today

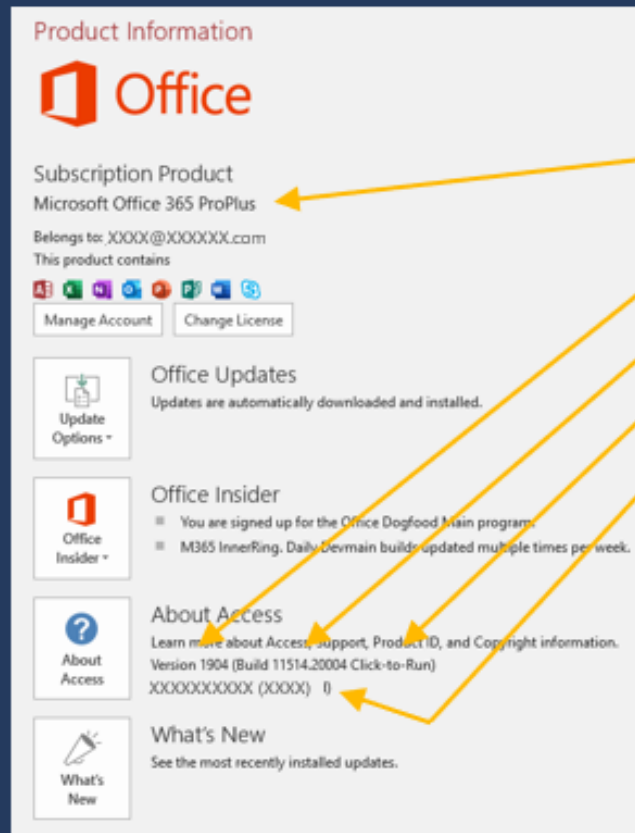
	Subscription		Perpetual	
	Enterprise (aka ProPlus, O365PP)	Consumer and SMB (aka Home, Personal, Business)	Enterprise (aka Volume License)	Consumer and SMB (aka Retail)
Product	<ul style="list-style-type: none"> Office 365 ProPlus 	<ul style="list-style-type: none"> Office 365 Home Office 365 Personal Office 365 Business Premium 	<ul style="list-style-type: none"> Office 2019 Professional Plus Office 2019 Standard 	<ul style="list-style-type: none"> Office 2019 Home and Student Office 2019 Home and Business Office 2019 Professional
New features	<ul style="list-style-type: none"> Monthly Semi-Annual 	<ul style="list-style-type: none"> Monthly 	<ul style="list-style-type: none"> Once 	<ul style="list-style-type: none"> Once
Quality improvements	<ul style="list-style-type: none"> Monthly Semi-Annual 	<ul style="list-style-type: none"> Monthly 	<ul style="list-style-type: none"> Critical Only 	<ul style="list-style-type: none"> Monthly
Deployment Tech	<ul style="list-style-type: none"> C2R 	<ul style="list-style-type: none"> C2R 	<ul style="list-style-type: none"> C2R* 	<ul style="list-style-type: none"> C2R

* Legacy Office Perpetual VL releases (i.e. Office 2010, Office 2013 and Office 2016) are still serviced through MSI

What Version do I have?



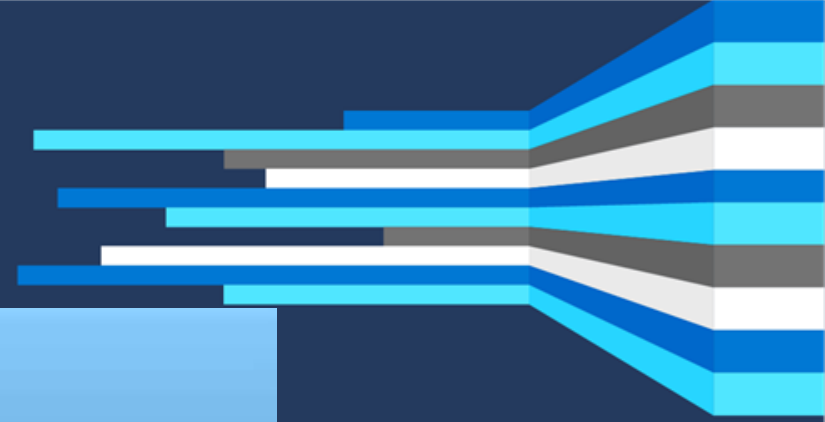
Splash screen will show Office 365, Office 2016 or Office 2019 depending on activated license.



Backstage's "Account" shows:

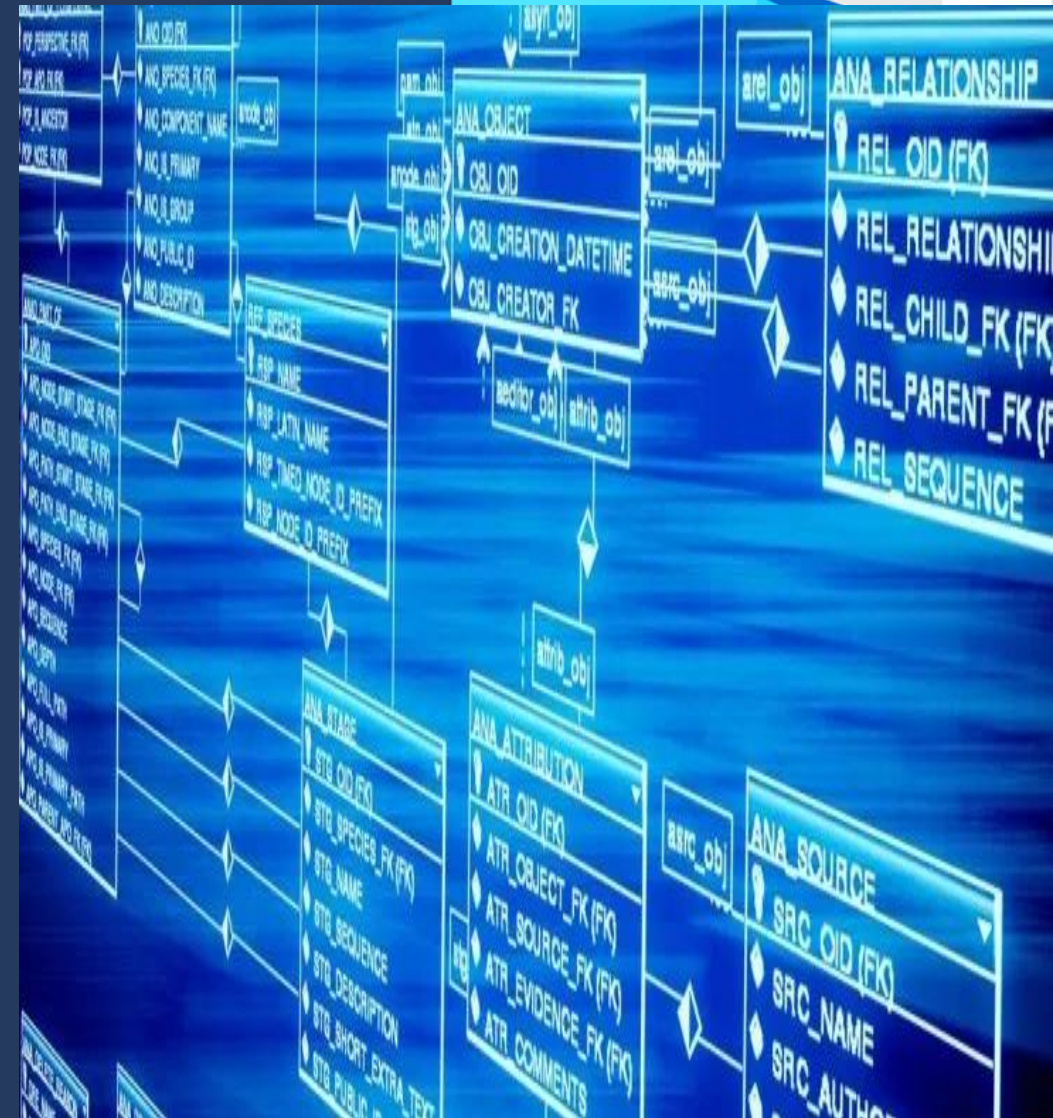
1. The licensed product
2. Update label
3. Build number
4. Deployment tech
5. Update Channel

Roadmap



Access Regressions and Reliability

- We hear you, and we absolutely understand the impact that our recent regressions have placed on your businesses.
- **A successful and seamless user experience is our top priority**
 - Not all problems directly stem for Access itself
 - Occasionally, changes in the Ecosystem (e.g. within Office or Windows) can directly impact us
 - Security fixes & Changes in Older Office channels
- We are doing much more to anticipate and more efficiently tackle potential problems that may arise in the tool before even it gets to your hands
 - We are confident that these changes will improve your Access experience.



Access Graph Connector

What is Microsoft Graph?

- Unified gateway to all the data and intelligence housed in Microsoft's intelligent cloud
- Includes calculated insights and rich relationship based on ML



Where Is The Connector?

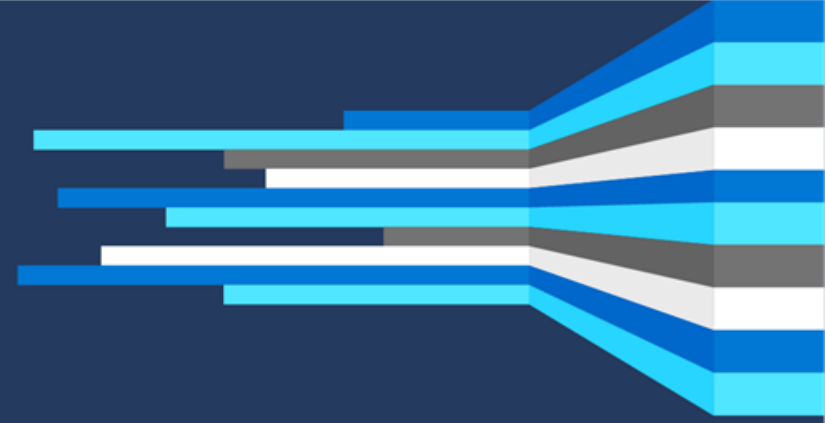
- The Access Graph Connector is still strategically important for Access
- It has been delayed for us to re-design and re-engineer it to provide the **Microsoft essential** privacy protections and governance

What else is in the Pipeline?



- Make 32-bit Access Large Address Aware
- Modern Web Browser Control (to support our new Chromium Edge browser)
- Monaco Editor
- Modern Controls
- Modern Chart Improvements
- Query by Example (QBE) Improvements Part 2
- Linked Table Manager Improvements

Community Engagement ft. the Access Team



We Appreciate Your Feedback!

Access

Feedback by UserVoice

Welcome to Access Suggestion Box!

Ebo Quansah (Stay signed in)

Settings · Sign out

We have a new page for [known issues and workaround](#) - please check it out prior to reporting new bugs/issues you

om our customers. To help us continue our investment in Access , we have partnered with UserVoice, e, to create this site to hear your ideas and suggestions. The product team working on Access e ideas and incorporate them into product planning discussions. While we can't guarantee any timelines, we will read all suggestions and respond to suggestions that get high number of votes. We d rename suggestions for clarity.

Give feedback

Microsoft

File Home Create External Data Database Tools Help Fields Table Tell me what you want to do

Help Contact Feedback Support

Show What's Training New

Tablet

ID Click to Add

(New)

Record: 1 of 1 No Filter Search

Feedback

I like something

We like to hear what we're doing right.

I don't like something

If something's not right, we want to know about it.

I have a suggestion

Share an idea or improvement.

Microsoft

Home Communities Events Blogs Microsoft Learn Info Center

Search the community

Access

Your community for best practices and the latest news on Access

15,585 Members Member

Select a Conversation Space

Conversations Blogs

Access

434 Unread posts

Search this community

Access Announcements

Welcome to the Access Community!

Connect and discuss the latest Access news, updates and best practices. Third party promotional content will be deleted. Thanks for your help keeping this community a vibrant and useful place!

Latest Activity

Newest Popular Experts Unanswered Unread

Welcome to the Access Tech Community!

Michal Bar (@Michal Bar) on Access on 03-14-2018

This is a place to share ideas, news, discuss the product, promote Access events and engage with Access MVPs. In this community you'll also find the [Access product blog](#), where we share updates from the Access team, customer success stories and MVPs article!

What's new in Access 2019

Access 2019

If you're upgrading to Access 2019 from Access 2016, you'll still have all the features you're used to—and you'll notice a few new ones as well!

Visualize your data with new charts

Choose from 11 new charts and make it easier to understand the data stored in forms and reports. Match fields to chart dimensions and preview your changes instantly.

LEARN MORE

Here's just a sampling of the new charts you can use in your Access databases.



How can we improve it?

The more you tell us, the more we can help.

Send

No thanks

Community Engagement: Access Team Priorities



RESPOND TO FEEDBACK

- In app/app store feedback
- [User Voice](#)



PRODUCT TEAM VISIBILITY

- [Access Blog](#)
- [Support Forums](#)
- [Access Tech Community](#)



CUSTOMER CONNECTION

- Customer visits and interviews



EVENTS PRESENCE

- Users group speaking
- Conferences/Access Days

Microsoft Confidential

Access DevCon 2019

MVP led event – organized by Karl Donaubaauer

Vienna, Austria April 2019

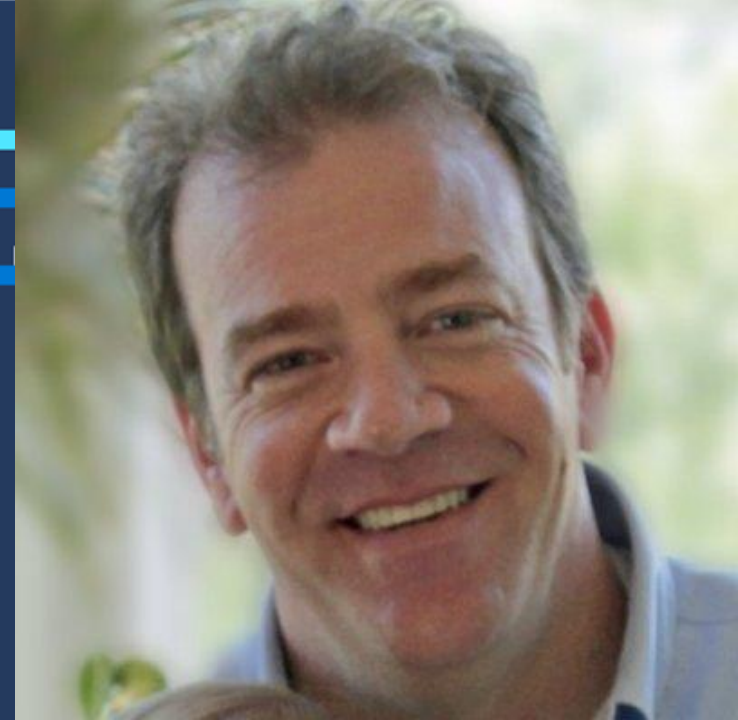


AccessDevcon.com



DAAUG (Denver Area Access Users Group) Session

Community led event – Organized by George Young
Denver, U.S.A August 2019



About DAAUG

DAAUG, the Denver Area Access Users Group was established in 1994 in order to help Microsoft Access users at all skill levels get the most from Microsoft's Office database product. Still active and going strong, the membership shares current methods and techniques at our monthly interactive labs, general meetings and special events. DAAUG is dedicated to helping everyone involved with Microsoft Access improve their database skills and understanding. Whether you are a novice user or advanced developer, there is a place for you in the Denver Area Access Users Group.

<https://www.daaug.org/>



Denver Area Access Users Group

NADD – Netherlands Access Developers Day

Community led event – organized by Daniel Polak and Lars Siemens

Aalsmeer, The Netherlands September 2019



Access Lunchtime Webinar

MVP led event – Organized by Maria Barnes

*Monthly Webinar, Team Presence September 2019

Access Lunchtime

Come join us on the last Tuesday of every month @ 12 noon CDT. Maria Barnes will be your host and we will cover lots of interesting topics related to Microsoft Access. This is a free webinar for 1 hour, we look forward to meeting you!

=== MEETING DETAILS ===

We meet every last Tuesday of the month at **12 noon CDT.**

To join our meeting, please use the following link and phone number or use your computer's speakers with audio:

Join Webex Meeting

www.accessusergroups.org



LUNCHtime
WEBINARS 

PAUG – Portland Access Users Group

MVP led event – organized by Jack Stockton

Portland, U.S.A September 2019



Conference

The dates for the **PAUG 2020 Database Designer International Conference** is set for the Fall:
October 10th (Saturday, 12 PM) – October 12th (Monday, 3 PM 2020).

www.paug.com



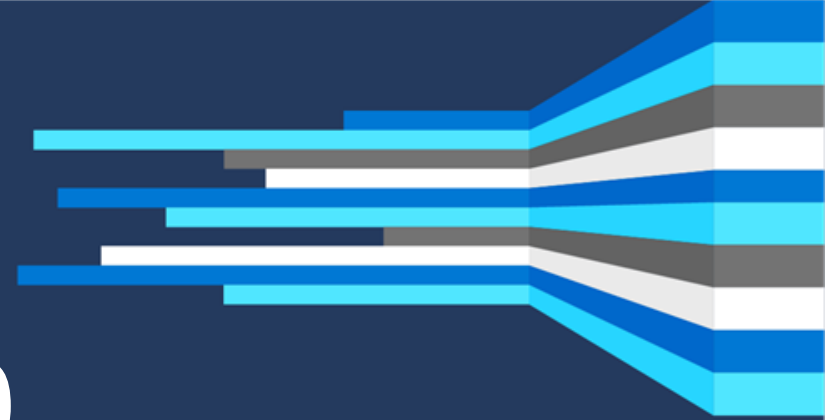
AEK - German Access Developers conference

MVP led event – organized by Karl Donaubaue
Nuremberg/Hanover, September/October 2019



donkarl.com





MVP Summit 2020



Who are MVPs?

Microsoft Most Valuable Professionals, or MVPs, are technology experts who passionately share their knowledge with the community. They are always on the "bleeding edge" and have an unstoppable urge to get their hands on new, exciting technologies. They have very deep knowledge of Microsoft products and services, while also being able to bring together diverse platforms, products and solutions, to solve real world problems. MVPs make up a global community of over 4,000 technical experts and community leaders across 90 countries/regions and are driven by their passion, community spirit, and quest for knowledge. Above all and in addition to their amazing technical abilities, MVPs are always willing to help others - that's what sets them apart.

<https://mvp.microsoft.com/>

There Are Several More to Come...



Stay in Touch (and Engaged)

[Learn about new features](#)

Connect with the community

MVPs

Users groups

Send us feedback

Become an Office Insider

[UserVoice](#)

[Access Blog](#)



Become an Office Insider

- Receive early exclusive monthly upgrades and new features
- Send us feedback!!! Tell us what you think and help shape the future of Office



Join the
program



office.com/insider



Tweet us



[@OfficeInsider](https://twitter.com/OfficeInsider)

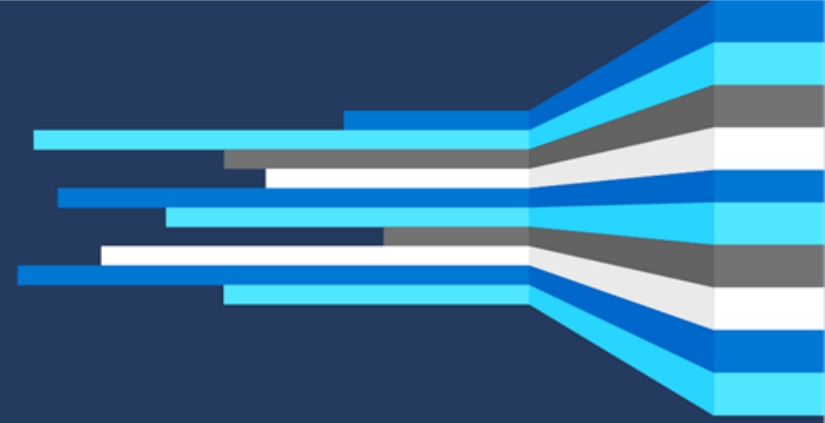


Be part of our
community



[aka.ms/
OfficeInsiderCommunity](https://aka.ms/OfficeInsiderCommunity)





Questions?